



JULY – SEPTEMBER 2023 • VOLUME 47, EDITION 3

SPARKS

NEWSLETTER OF THE WESTERN DEVELOPMENT MUSEUM



WDM Programs

Check out our variety of summer camps & events

Top 20 Women CEOs

Joan Kanigan named to list of top successful women leaders

About Us

Model railway celebrates 30 years

Here is What is Happening at the WDM

More information about summer events (including summer camps) on page 9.

All Locations

September 16	BMO Day at the WDM – Free admission
--------------	-------------------------------------

WDM Moose Jaw

July 2, 9, 16 & 23 August 6 & 13	Summer Gallery Pop Up, 1:00 - 4:00 pm
-------------------------------------	---------------------------------------

July 29 – 30	Brickspo
--------------	----------

August 12	Blow Off Some Steam
-----------	---------------------

WDM North Battleford

July 11 – 13, 24 – 28	Kanaweyimik Child & Family Services Tipi Teachings, 10:00 am – 4:00 pm
-----------------------	--

August 8 – 9, 15 – 17, 29 – 31	Kanaweyimik Child & Family Services Tipi Teachings, 10:00 am – 3:00 pm
-----------------------------------	--

August 19 – 20	History in Motion
----------------	-------------------

WDM Saskatoon

July 6 – August 26	Heritage Skills Demonstrations Thursdays from 6:00 – 7:30 pm, Fridays & Saturdays from 1:00 – 3:00 pm
--------------------	--

July 8	Summer Fun Day, 11:00 am – 4:00 pm
--------	------------------------------------

July 11 & August 15	Pop in and Play with the WDM
---------------------	------------------------------

August 10 & 24	Transportation Through Time, 6:00 – 7:30 pm
----------------	---

August 11	Plowing Through the Past, 1:00 – 3:00 pm
-----------	--

WDM Yorkton

July 9 & 22	Movies at the Museum
-------------	----------------------

July 12	Museum Day, 1:00 – 4:00 pm
---------	----------------------------

August 5 – 6	65th Threshermen's Show & Seniors' Festival
--------------	---

August 24	Discovery Box Program
-----------	-----------------------

Events and dates listed here are subject to change. For details visit wdm.ca



Summer at the WDM

I hope everyone is well and is enjoying the summer. At the WDM, we've been preparing for a busy summer season with various programs and activities occurring at all four Museum locations.

Whether it's checking out Summer Fun Day in Saskatoon on July 8, taking in the sights and sounds of the 65th Threshermen's Show and Seniors' Festival in Yorkton on August 5 - 6, Blow Off Some Steam in Moose Jaw on August 12 or History in Motion on August 19 in North Battleford, there is lots to do at a WDM near you this summer.

In addition to our signature events, there will be summer camps, seek and finds and pop up activities throughout the summer. For the most up-to-date information on what is happening at the WDM check out our website at [**wdm.ca/events**](https://wdm.ca/events).

Thanks to the sponsorship of BMO Financial Group, the WDM is excited to offer a free admission day on September 16. BMO Day at the WDM removes economic barriers which may prevent some people from visiting the WDM. We are grateful to BMO for their support of this initiative. Two more free admission days will also be offered in 2024.

Wishing you and your family a wonderful summer and we hope to see you soon.

Sincerely,

A handwritten signature in black ink that reads "Joan". The signature is written in a cursive, flowing style.

Joan Kanigan, CEO

Sparks is published four times a year and delivered to WDM members. It's a great way to keep up to date on everything happening at all WDM locations.

Editor: Corinne Daelick

© 2023 Western Development Museum

On The Cover: A visit to the Blacksmith Shop at the WDM North Battleford.

In This Edition . . .

6 Rollin' Down The Track

The Rails North: Prairies to Parkland model railway has been delighting visitors to the WDM Saskatoon since 1993. Hear about how it all started with the Saskatoon Railway Modellers.

8 Joan Kanigan

Read about how the WDM's CEO is being recognized for her leadership and for inspiring future leaders.

18 Blairmore Ring

Learn about this innovation in mining that helped launch the potash industry in Saskatchewan.

9

Summer at the WDM & Removable Fridge Calendar



Look for a variety of activities and events taking place at the WDM this summer. From kids' summer camps to pop up activities in our galleries to demonstrations with our Operating Collection, there will be something for everyone.

WDM Board of Directors

Orlanda Drebit
Chair, Saskatoon

Robert Linn
Vice Chair, Saskatoon

Bernie Broughton
Secretary, Saskatoon

Gwen Beitel
Spring Valley

Anita Fuller
Saskatoon

Kelsie Stettner
Regina

Hours of Operation

WDM Moose Jaw
Daily 9:00 am – 5:00 pm

WDM North Battleford
Daily 9:00 am – 5:00 pm

WDM Saskatoon
Mon – Wed 9:00 am – 5:00 pm
Thurs 9:00 am – 8:00 pm
Fri – Sun 9:00 am – 5:00 pm

Boomtown Café (Saskatoon)
Daily 8:30 am – 4:00 pm

WDM Yorkton
June to August
Daily 9:00 am – 5:00 pm

September
Weekdays 9:00 am – 5:00 pm
Weekends 12:00 pm – 5:00 pm

#MemoryMondays

On the first Monday of each month, our Facebook page features historic Saskatchewan memories. Share our post or comment with your own memory.

Find us on Facebook at facebook.com/wdm.museum

Some things never change and that includes children having fun in the summertime. In this issue of *Sparks* we're featuring children at play! From baseball to toy horses to wagons, take a look at ways children kept busy in the past.



Two boys playing baseball in a field, 1925

WDM BARTON COLLECTION 04036



Two children playing on a tricycle and wagon.
Date unknown

WDM BARTON COLLECTION 08038



Playing on teeter-totters at Pike Lake, August 1927

WDM BARTON COLLECTION 04043



A child playing on a homemade play horse, complete with a saddle. Date unknown

WDM BARTON COLLECTION 07044



A small child playing with a toy tractor, pulling a wagon with a kitten in it. Date unknown

WDM BARTON COLLECTION 12066

Rollin' Down The Track

Rails North - Prairies to Parkland



If you've been to the WDM Saskatoon, you've likely spent some time by the model railways. You may be one of the thousands of visitors who has pressed the button to send the little train on its loop of the track. Thanks to the efforts of a small group of volunteers called the Saskatoon Railway Modellers (SRM), the main layout has been in operation for 30 years. The WDM is so grateful to these dedicated volunteers for sharing their model railway with our visitors.

In fall 1992, Don Diamond, Jim Banner, Wolf Kurz, Scott Gibb and Tom Powell were chatting about railway modelling when, as Tom put it, "we discovered we had at least two common desires: one was to find a place where we could build a permanent layout for the model railway and the second was that the public could operate it even if we were not attending it. Jim brought a hand drawn track plan and the group really liked it. We knew it was time for us to make this a reality in Saskatoon." And the idea for the model railway at the WDM Saskatoon was born.



SRM founding members (L-R): Tom Powell, Jim Banner, Wolf Kurz, Scott Gibb

The SRM met with the WDM about the possibility of setting up a display. It did not take long for the SRM and WDM to come to an agreement where the WDM would provide space and electricity for the model railway and the SRM would own, operate and maintain it. Construction on *Rails North - Prairies to Parkland* began in December 1992. According to Tom, "Our railway was a diorama depicting the first railway built



Making adjustments to the Big One Railway at Pion-Era 2017, Wolf Kurz and the late Scott Gibb

Check out this 2017 video about the SRM on the WDM's YouTube channel:



in Saskatchewan, which ran from Regina to Prince Albert." The train made its first run in spring 1993 with visitors pushing a button to start the train on its trip. The model has run virtually unchanged ever since.

In 1995, another display was installed next to *Rails North*. This new display was designed to look like a 1950s living room with a model railway on the floor. It contains two railways, one an O Gauge and the other a G Gauge/Scale. The SRM go the extra mile at Christmas by decorating the living room to recreate holiday magic from days gone by.

Not content to sit back and relax with the two displays at the WDM, the SRM also constructed an impressive portable G Gauge railway nicknamed "The Big One." They have travelled around Saskatchewan and Alberta with this layout and have had it on display several times at the WDM Saskatoon.

The little group that started with five railway modellers now has eight members which includes original modellers Tom Powell and Wolf Kurz. This group keeps the model trains chugging along, bringing joy to visitors of all ages while promoting model railways as a hobby. Special thanks to Tom Powell for sharing the history of the SRM with us and to all the group members, past and present, for their enthusiastic support of the WDM.

Model Railway Fun Facts

- In March 2022, the *Rails North* train hit a major milestone when it crossed over 500,000 cycles which is 1,000,000 laps.
- For the last 30 years, on average, the start button was pushed every nine minutes.
- The train runs for approximately 606 hours per year.

Joan Kanigan named as one of the Top 20 Outstanding Women CEOs of 2023

The Women Leaders Magazine and *TheWomenleaders.com* is a print and digital magazine based in New York. The goal of the Magazine is to identify the most dynamic and successful women leaders from around the world who would inspire young entrepreneurs. WDM CEO Joan Kanigan was proactively selected by the Magazine as one of the Top 20 Outstanding Women CEOs of 2023. Joan was chosen using a process of data analysis from information available through public domains such as websites, social media platforms, press releases, news, blogs and customer review portals. The Magazine selects women from all industries across Canada and the United States.

Joan was selected for her work as a non-profit sector leader. Specifically, they noted Joan's dynamic experience of over two decades managing and strengthening non-profits. Her current work with the WDM to increase diversity and inclusion, a part of the WDM's vision, was also noted as a factor in her selection.

From WDM Board of Directors Chair Orlanda Drebit, "It appears this magazine has discovered the secret that we have known all along – we have a wonderful asset in Joan Kanigan heading the WDM organization. Her dedication to the stakeholders, the organization, the staff, and the skills that she brings forward are unparalleled."

Congratulations to Joan on this outstanding recognition and achievement!



Learn about Joan and the other inspiring women leaders here:





Summer at the WDM

Jazzy July and Awesome August Activities

Look for a variety of activities and events taking place at the WDM this summer. From kids' summer camps to pop up activities in our galleries to demonstrations with our Operating Collection, there will be something for everyone. Visit wdm.ca/events for more details on these and other WDM events.



WDM Moose Jaw

Summer Pop-Up Gallery Sessions

July 2, 9, 16 & 23, August 6 & 13 1:00 – 4:00 pm

We'll be popping up in the Museum galleries with crafts, games and interpretation for youngsters and the young at heart.

Brickspo

July 29 – 30, 9:00 am – 5:00 pm

See amazing creations by the talented adult builders of the Saskatchewan LEGO® Users Group, and others from across western Canada. Take in special attendee events and public talks plus a LEGO® yard sale and other vendors.

Blow Off Some Steam

August 12, 11:00 am – 4:00 pm

Learn about the importance of steam from trains and tractors to cars and machinery. See our restored 75 Case traction engine and take part in a special steam-themed family activities and scavenger hunt.



WDM North Battleford

Heritage Farm and Settler Village Summer Camps

Pre-registration required

Children ages 7–12 are invited to join us for our themed summer camps. Register for one week or more. Camp runs from 9:00 am – 5:00 pm.

- **July 17 – 21:** Crafts and Activities from Around the World
Make crafts from around the world.
- **July 24 – 28:** Animals of Saskatchewan
Make paper mache animals reflecting the animals of Saskatchewan.
- **July 31 – August 4:** Recipes from Around the World
Make snacks from around the world.
- **August 8 – 11:** Look for the Helpers
Spend time with local first responders.

History in Motion

August 19 – 20, 10:00 am – 5:00 pm

The Heritage Farm and Village comes alive with demonstrations and activities. There will also be tipi teachings from Kanawayimik Child & Family Services in the tipi village.



Summer Fun Fridge Calendar

Stick this calendar to your fridge to keep track of events and activities at the WDM. Visit wdm.ca/events for more details.

WDM Moose Jaw

WDM North Battleford

WDM Saskatoon

WDM Yorkton

Jazzy July

Sunday	Monday	Tuesday	Wednesday	Thursday	Friday	Saturday
						1 July 1 Picnic
2 Summer Pop Up	3	4	5	6 Heritage Skills Demonstrations	7	8 Summer Fun Day
9 Summer Pop Up Movies at the Museum	10	11 Pop In and Play Kanaweyimik Child & Family Services Tipi Teachings	12 Museum Day	13 Heritage Skills Demonstrations	14	15
16 Summer Pop Up	17 Heritage Farm and Village Summer Camp * Hands On Heritage Camp *	18	19	20 Heritage Skills Demonstrations	21	22 Movies at the Museum
23 Summer Pop Up	24 Heritage Farm and Village Summer Camp * Kanaweyimik Child & Family Services Tipi Teachings	25	26	27 Heritage Skills Demonstrations	28	29 Brickspo

Awesome August

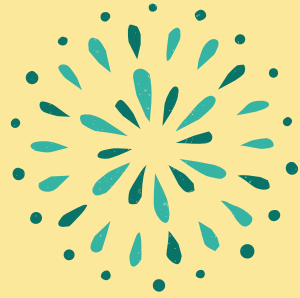
Sunday	Monday	Tuesday	Wednesday	Thursday	Friday	Saturday
30 Brickspo	31 Heritage Farm and Village Summer Camp * Hands On Heritage Camp *	1	2	3	4	5 Threshermen's Show & Seniors' Festival
6 Summer Pop Up Threshermen's Show & Seniors' Festival	7	8 Heritage Farm and Village Summer Camp * Kanaweyimik Child & Family Services Tipi Teachings	9	10 Transportation Through Time Heritage Skills Demonstrations	11 Plowing Through the Past	12 Blow Off Some Steam
13 Summer Pop Up	14	15 Kanaweyimik Child & Family Services Tipi Teachings Blast From The Past Summer Camp Pop In and Play	16	17 Heritage Skills Demonstrations	18	19 History in Motion
20 History in Motion	21	22	23	24 Transportation Through Time Discovery Box Program Heritage Skills Demonstrations	25	26
27	28	29 Kanaweyimik Child & Family Services Tipi Teachings	30	31		

Check out these other activities at the WDM:

- July–August: Staff from the WDM Moose Jaw will be out and about at various community events
- Seek and Find activities available at all locations throughout the year

*** Note:** Pre-registration is required for all summer camps.

Visit wdm.ca/events for times and program details.



WDM Saskatoon

Summer Fun Day

July 8, 11:00 am – 4:00 pm

Pack a picnic lunch to enjoy in Boomtown Park. Bring the family and join us for lawn games, and harvest machinery and blacksmith demonstrations.

Pop In and Play

July 11 & August 15

There will be activities throughout the day in two different zones. Take this opportunity to have your child connect with the WDM and our hands-on artifacts in a fun and interactive way. Activities are designed for ages 3 - 6 with visitors of all ages welcome.

Hands-On Heritage Camps

July 17 – 21 & July 31 – August 4, 9:00 am – :30 pm

Have a blast learning about Saskatchewan's past! For ages 7 - 10. Campers will learn new skills and peek behind-the-scenes of the Museum. There will be crafts, activities and games for museum-loving children. Pre-registration required.

WDM Yorkton

Museum Day

July 12, 1:00 – 4:00 pm

Geared for children aged preschool - 12 years old, join us for an afternoon of hands-on activities and crafts.

65th Annual Threshermen's Show and Seniors' Festival

August 5 – 6

Volunteers from the Yorkton Threshermen's Club and the WDM will be running various vintage tractors from the WDM Operating Collection. The weekend consists of threshing, plowing, the Story of Harvest, flour grinding and rolled oats, blacksmithing, sawing, antique tractor display and competition, Parade of Power, horse wagon rides, live entertainment and children's train rides.

Blast From The Past Summer Camp

August 15 – 17, 9:00 am - 5:00 pm

It's time for a blast from the past! Campers aged 6 - 10 are invited to join us to get hands-on with history by learning through activities and crafts. Before and after care is available for an additional fee. Pre-registration required.

BMO Day at the WDM

As part of a three-year sponsorship agreement with BMO Financial Group, the WDM is offering two free admission days per year at all WDM locations. Started in 2022, BMO Day at the WDM is an opportunity for everyone in the community to visit the WDM at no charge. The next BMO Day at the WDM is Saturday, September 16. To learn more, visit us at wdm.ca/bmo.



Bank of Montreal in Kelliher

BMO FINANCIAL GROUP CORPORATE ARCHIVES

Purchasing a Gift Membership

Membership Matters! As a WDM Member, you are part of a growing number of people making a difference and connecting with Saskatchewan's diverse histories. Do you want to share your passion for the WDM with others? Then purchase a WDM Membership Gift Card that can be redeemed at any of the four WDM locations. Membership Gift Cards are available for one or two years in a variety of categories: family, adult duo, adult single, senior/student duo and senior/student single.



Visit wdm.ca/membershipgiftcard to purchase a gift membership or scan the QR code.

BRAiNBUSTERS

Saskatchewan Emblems Word Search

Did you know Saskatchewan has an official tree, sport and fossil? Ten official Saskatchewan emblems are hidden in this word search. See if you can find them!

- Curling
- Potash
- Saskatoon Berry
- Sharp Tailed Grouse
- T Rex
- Walleye
- Western Red Lily
- Wheat Sheaf
- White Birch
- White Tailed Deer

Y G N U P N F X O K Y S R W C O I Z
 Q S G H X E W S Q G S P E H I B U G
 A B W A R E A W W D R W O I L E D E
 W B P Q X N K H M I T C R T Y W P T
 I G P D Z U G E U D L U V E A E N P
 P S K V W X L A E Z D R L B R S P A
 K Q L D G X L T K U I L S I R T H L
 J H I N X A S S X E A I T R H E E E
 W J T U J E E H E W L N C C E R S J
 X P G L O K K E J A V G F H I N T L
 Q W H I T E T A I L E D D E E R I E
 F Y Q C O E A F D H D P E Y Z E G A
 N A Z P W H L S X W E I L K L D Y K
 U X U Y P N I X A A X E L T P L B Z
 Y I T Z V R G W E E X D Y T K I F D
 S H H W W V W G R S D K Z G S L Q S
 V E S A S K A T O O N B E R R Y X T
 S H A R P T A I L E D G R O U S E G



Search for the Saskatchewan Symbol

Hidden somewhere in this issue of *Sparks* is a Western Red Lily like this one. This lily is Saskatchewan's official flower. Can you find it?

Weather Quiz

In Saskatchewan we love to talk about the weather. Let's see how much you know about it!

1. What town calls itself the Blizzard Capital of Saskatchewan?
 - a. Kenaston
 - b. La Loche
 - c. Tisdale
2. What place calls itself the Sunshine Capital of Saskatchewan?
 - a. Estevan
 - b. Hudson Bay
 - c. Mortlach
3. Where was Canada's most deadly tornado?
 - a. Manitou Beach, 2022
 - b. Regina, 1912
 - c. Kamsack, 1944
4. Until 2021, these towns jointly held the record for the hottest recorded temperature in Canada?
 - a. Yellow Grass & Midale, 1937
 - b. Willow Bunch & Coronach, 1973
 - c. Yellow Creek & Crystal Springs, 1968
5. What town is considered Saskatchewan's warmest place?
 - a. Carlyle
 - b. Eastend
 - c. Maple Creek

IT'S A SASK FACT!

Did you know...

According to Statistics Canada, in 2021 Saskatchewan farms accounted for 43.1% of Canada's cropland with 40.3 million acres planted. This is the largest amount of cropland in all of Canada. Saskatchewan farmers grew the most canola, spring wheat, flax, oats, lentils, chickpeas and faba beans in Canada.

Museum Highlights

WDM MOOSE JAW

Linn Tractor-Truck

WDM-1973-NB-336

In winter 1928 - 1929, this tractor-truck was one of a fleet of 13 used by The Pas Lumber Company. It carried heavy loads over rough terrain from the end of the rail line at Flin Flon, Manitoba to the Island Falls hydroelectric station construction site in northeastern Saskatchewan.

The tractor-truck was built for power, not for speed. It inched along at eight - ten kilometres per hour pulling six loaded sleds over specially-made ice roads.

In 1934, the tractor-truck was sold to the God's Lake Gold Mine in Manitoba but when that mine closed in 1944, The Pas Lumber Company bought it back to haul logging sleighs southwest of Hudson Bay.



WDM NORTH BATTLEFORD

Harris Family House

WDM-1988-NB-58

In 1906, Richard and Hattie Harris moved from Nova Scotia and settled in Fielding where they opened a successful hardware and general store.

Due to health concerns, in 1915 it was suggested that Richard take up farming so he could spend more time outdoors. The family purchased some land with a house but the house was destroyed by fire shortly before they were to move in. With the house gone, Hattie drew up plans and hired a contractor from North Battleford to build a new house which they moved into in fall 1915.

The Harris family remained in this house until 1981. It was donated to the WDM in 1988.



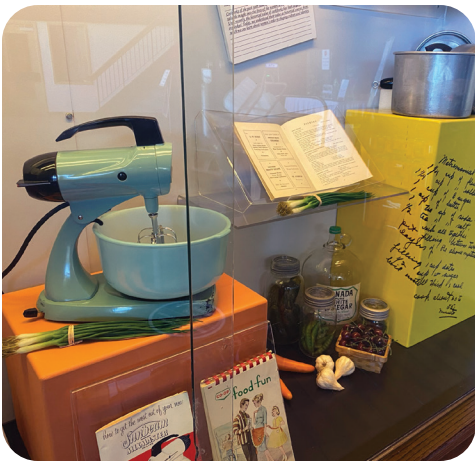
WDM SASKATOON

Cookbook Connections Exhibit

Recipes and cookbooks are a mainstay in any cook's kitchen. They have been passed down, used to advertise ingredients or have been used to showcase new kitchen products. To show off the WDM's cookbook collection, a showcase exhibit was created featuring community cookbooks plus gadgets from Saskatchewan kitchens.

For generations, both rural and urban Saskatchewan communities have published cookbooks featuring recipes, traditions and ingredients. They would often be sold to raise money for schools, churches and community groups.

This exhibit is currently on display at the WDM Saskatoon. Check out our video series, Exploring Recipes from the WDM Collection at: wdm.ca/exploring-recipes.



WDM YORKTON

Sports Day Handbill

WDM-1995-Y-1744

In 1995, the Bladon family of Lang donated more than 200 artifacts to the WDM. The artifacts, many of them toys, give us a glimpse into early 20th century settler life. They are featured in the exhibit, *In A Prairie Attic: Bladon Family Toys*.

Among the artifacts is a handbill for Lang's Patriotic Sports Day, an event hosted by the Canadian Patriotic Fund (CPF). Established by the federal government in 1914, the CPF collected money to financially support families of soldiers during the First World War. By 1917, there were 400 Saskatchewan branches of the CPF. Donations from Saskatchewan people and organizations amounted to more than \$1.1 million, a sizeable amount of money for the time. The provincial government contributed \$1.5 million.

PATRIOTIC SPORTS DAY
JULY 5th LANG JULY 5th
Big Attractions in Baseball, Athletic Sports, etc.

BASEBALL
10-30 a.m., Boy Scouts, 1st, \$10; 2nd, \$5; 1 p.m., Juniors: Lang vs. Wilcox, 1st, \$15; 2nd, \$8
3 p.m., Senior: Lang vs. Wilcox, 1st, \$40; 2nd, \$20

ATHLETIC SPORTS

Girls' 80m, 9 yrs. and under	\$1.00	200m	\$1.00	Boys' 200m, 10 yrs. and under	\$1.00	1,000
Girls' 80m, 10	1.00	400	1.00	Boys' 400m, 10 yrs. and under	2.00	1,000
Girls' 80m, 11	1.00	1,000	1.00	Boys' 800m, 10 yrs. and under	4.00	1,000
Girls' 80m, 12	1.00	400	1.00	Boys' 1,600m, 10 yrs. and under	8.00	1,000
Girls' 80m, 13	1.00	1,000	1.00	Boys' 3,200m, 10 yrs. and under	16.00	1,000
Girls' 80m, 14	1.00	1,000	1.00	Boys' 6,400m, 10 yrs. and under	32.00	1,000
Girls' 80m, 15	1.00	1,000	1.00	Boys' 12,800m, 10 yrs. and under	64.00	1,000
Girls' 80m, 16	1.00	1,000	1.00	Boys' 25,600m, 10 yrs. and under	128.00	1,000
Girls' 80m, 17	1.00	1,000	1.00	Boys' 51,200m, 10 yrs. and under	256.00	1,000
Girls' 80m, 18	1.00	1,000	1.00	Boys' 102,400m, 10 yrs. and under	512.00	1,000
Girls' 80m, 19	1.00	1,000	1.00	Boys' 204,800m, 10 yrs. and under	1,024.00	1,000
Girls' 80m, 20	1.00	1,000	1.00	Boys' 409,600m, 10 yrs. and under	2,048.00	1,000
Girls' 80m, 21	1.00	1,000	1.00	Boys' 819,200m, 10 yrs. and under	4,096.00	1,000
Girls' 80m, 22	1.00	1,000	1.00	Boys' 1,638,400m, 10 yrs. and under	8,192.00	1,000
Girls' 80m, 23	1.00	1,000	1.00	Boys' 3,276,800m, 10 yrs. and under	16,384.00	1,000
Girls' 80m, 24	1.00	1,000	1.00	Boys' 6,553,600m, 10 yrs. and under	32,768.00	1,000
Girls' 80m, 25	1.00	1,000	1.00	Boys' 13,107,200m, 10 yrs. and under	65,536.00	1,000
Girls' 80m, 26	1.00	1,000	1.00	Boys' 26,214,400m, 10 yrs. and under	131,072.00	1,000
Girls' 80m, 27	1.00	1,000	1.00	Boys' 52,428,800m, 10 yrs. and under	262,144.00	1,000
Girls' 80m, 28	1.00	1,000	1.00	Boys' 104,857,600m, 10 yrs. and under	524,288.00	1,000
Girls' 80m, 29	1.00	1,000	1.00	Boys' 209,715,200m, 10 yrs. and under	1,048,576.00	1,000
Girls' 80m, 30	1.00	1,000	1.00	Boys' 419,430,400m, 10 yrs. and under	2,097,152.00	1,000
Girls' 80m, 31	1.00	1,000	1.00	Boys' 838,860,800m, 10 yrs. and under	4,194,304.00	1,000
Girls' 80m, 32	1.00	1,000	1.00	Boys' 1,677,721,600m, 10 yrs. and under	8,388,608.00	1,000
Girls' 80m, 33	1.00	1,000	1.00	Boys' 3,355,443,200m, 10 yrs. and under	16,777,216.00	1,000
Girls' 80m, 34	1.00	1,000	1.00	Boys' 6,710,886,400m, 10 yrs. and under	33,554,432.00	1,000
Girls' 80m, 35	1.00	1,000	1.00	Boys' 13,421,772,800m, 10 yrs. and under	67,108,864.00	1,000
Girls' 80m, 36	1.00	1,000	1.00	Boys' 26,843,545,600m, 10 yrs. and under	134,217,728.00	1,000
Girls' 80m, 37	1.00	1,000	1.00	Boys' 53,687,091,200m, 10 yrs. and under	268,435,456.00	1,000
Girls' 80m, 38	1.00	1,000	1.00	Boys' 107,374,182,400m, 10 yrs. and under	536,870,912.00	1,000
Girls' 80m, 39	1.00	1,000	1.00	Boys' 214,748,364,800m, 10 yrs. and under	1,073,741,824.00	1,000
Girls' 80m, 40	1.00	1,000	1.00	Boys' 429,496,729,600m, 10 yrs. and under	2,147,483,648.00	1,000
Girls' 80m, 41	1.00	1,000	1.00	Boys' 858,993,459,200m, 10 yrs. and under	4,294,967,296.00	1,000
Girls' 80m, 42	1.00	1,000	1.00	Boys' 1,717,986,918,400m, 10 yrs. and under	8,589,934,592.00	1,000
Girls' 80m, 43	1.00	1,000	1.00	Boys' 3,435,973,836,800m, 10 yrs. and under	17,179,869,184.00	1,000
Girls' 80m, 44	1.00	1,000	1.00	Boys' 6,871,947,673,600m, 10 yrs. and under	34,359,738,368.00	1,000
Girls' 80m, 45	1.00	1,000	1.00	Boys' 13,743,895,347,200m, 10 yrs. and under	68,719,476,736.00	1,000
Girls' 80m, 46	1.00	1,000	1.00	Boys' 27,487,790,694,400m, 10 yrs. and under	137,438,953,472.00	1,000
Girls' 80m, 47	1.00	1,000	1.00	Boys' 54,975,581,388,800m, 10 yrs. and under	274,877,906,944.00	1,000
Girls' 80m, 48	1.00	1,000	1.00	Boys' 109,951,162,777,600m, 10 yrs. and under	549,755,813,888.00	1,000
Girls' 80m, 49	1.00	1,000	1.00	Boys' 219,902,325,555,200m, 10 yrs. and under	1,099,511,627,776.00	1,000
Girls' 80m, 50	1.00	1,000	1.00	Boys' 439,804,651,110,400m, 10 yrs. and under	2,199,023,255,552.00	1,000
Girls' 80m, 51	1.00	1,000	1.00	Boys' 879,609,302,220,800m, 10 yrs. and under	4,398,046,511,104.00	1,000
Girls' 80m, 52	1.00	1,000	1.00	Boys' 1,759,218,604,441,600m, 10 yrs. and under	8,796,093,022,208.00	1,000
Girls' 80m, 53	1.00	1,000	1.00	Boys' 3,518,437,208,883,200m, 10 yrs. and under	17,592,186,044,416.00	1,000
Girls' 80m, 54	1.00	1,000	1.00	Boys' 7,036,874,417,766,400m, 10 yrs. and under	35,184,372,088,832.00	1,000
Girls' 80m, 55	1.00	1,000	1.00	Boys' 14,073,748,835,532,800m, 10 yrs. and under	70,368,744,177,664.00	1,000
Girls' 80m, 56	1.00	1,000	1.00	Boys' 28,147,497,671,065,600m, 10 yrs. and under	140,737,488,355,328.00	1,000
Girls' 80m, 57	1.00	1,000	1.00	Boys' 56,294,995,342,131,200m, 10 yrs. and under	281,474,976,710,656.00	1,000
Girls' 80m, 58	1.00	1,000	1.00	Boys' 112,589,990,684,262,400m, 10 yrs. and under	562,949,953,421,312.00	1,000
Girls' 80m, 59	1.00	1,000	1.00	Boys' 225,179,981,368,524,800m, 10 yrs. and under	1,125,899,906,842,624.00	1,000
Girls' 80m, 60	1.00	1,000	1.00	Boys' 450,359,962,737,049,600m, 10 yrs. and under	2,251,799,813,685,248.00	1,000
Girls' 80m, 61	1.00	1,000	1.00	Boys' 900,719,925,474,099,200m, 10 yrs. and under	4,503,599,627,370,496.00	1,000
Girls' 80m, 62	1.00	1,000	1.00	Boys' 1,801,439,850,948,198,400m, 10 yrs. and under	9,007,199,254,740,992.00	1,000
Girls' 80m, 63	1.00	1,000	1.00	Boys' 3,602,879,701,896,396,800m, 10 yrs. and under	18,014,398,509,481,984.00	1,000
Girls' 80m, 64	1.00	1,000	1.00	Boys' 7,205,759,403,792,793,600m, 10 yrs. and under	36,028,797,018,963,968.00	1,000
Girls' 80m, 65	1.00	1,000	1.00	Boys' 14,411,518,807,585,587,200m, 10 yrs. and under	72,057,594,037,927,936.00	1,000
Girls' 80m, 66	1.00	1,000	1.00	Boys' 28,823,037,615,171,174,400m, 10 yrs. and under	144,115,188,075,855,872.00	1,000
Girls' 80m, 67	1.00	1,000	1.00	Boys' 57,646,075,230,342,348,800m, 10 yrs. and under	288,230,376,151,711,744.00	1,000
Girls' 80m, 68	1.00	1,000	1.00	Boys' 115,292,150,460,684,697,600m, 10 yrs. and under	576,460,752,303,423,488.00	1,000
Girls' 80m, 69	1.00	1,000	1.00	Boys' 230,584,300,921,369,395,200m, 10 yrs. and under	1,152,921,504,606,846,976.00	1,000
Girls' 80m, 70	1.00	1,000	1.00	Boys' 461,168,601,842,738,790,400m, 10 yrs. and under	2,305,843,009,213,693,952.00	1,000
Girls' 80m, 71	1.00	1,000	1.00	Boys' 922,337,203,685,477,580,800m, 10 yrs. and under	4,611,686,018,427,387,904.00	1,000
Girls' 80m, 72	1.00	1,000	1.00	Boys' 1,844,674,407,370,955,161,600m, 10 yrs. and under	9,223,372,036,854,775,808.00	1,000
Girls' 80m, 73	1.00	1,000	1.00	Boys' 3,689,348,814,741,910,323,200m, 10 yrs. and under	18,446,744,073,709,551,616.00	1,000
Girls' 80m, 74	1.00	1,000	1.00	Boys' 7,378,697,629,483,820,646,400m, 10 yrs. and under	36,893,488,147,419,103,232.00	1,000
Girls' 80m, 75	1.00	1,000	1.00	Boys' 14,757,395,258,967,641,292,800m, 10 yrs. and under	73,786,976,294,838,206,464.00	1,000
Girls' 80m, 76	1.00	1,000	1.00	Boys' 29,514,790,517,935,282,585,600m, 10 yrs. and under	14,757,395,258,967,641,292.80	1,000
Girls' 80m, 77	1.00	1,000	1.00	Boys' 59,029,581,035,870,565,171,200m, 10 yrs. and under	29,514,790,517,935,282,585.60	1,000
Girls' 80m, 78	1.00	1,000	1.00	Boys' 118,059,162,071,741,130,342,400m, 10 yrs. and under	59,029,581,035,870,565,171.20	1,000
Girls' 80m, 79	1.00	1,000	1.00	Boys' 236,118,324,143,482,260,684,800m, 10 yrs. and under	118,059,162,071,741,130,342.40	1,000
Girls' 80m, 80	1.00	1,000	1.00	Boys' 472,236,648,286,964,521,369,600m, 10 yrs. and under	236,118,324,143,482,260,684.80	1,000
Girls' 80m, 81	1.00	1,000	1.00	Boys' 944,473,296,573,929,042,739,200m, 10 yrs. and under	472,236,648,286,964,521,369.60	1,000
Girls' 80m, 82	1.00	1,000	1.00	Boys' 1,888,946,593,147,858,085,478,400m, 10 yrs. and under	944,473,296,573,929,042,739.20	1,000
Girls' 80m, 83	1.00	1,000	1.00	Boys' 3,777,893,186,295,716,170,956,800m, 10 yrs. and under	1,888,946,593,147,858,085,478.40	1,000
Girls' 80m, 84	1.00	1,000	1.00	Boys' 7,555,786,372,591,432,341,913,600m, 10 yrs. and under	3,777,893,186,295,716,170,956.80	1,000
Girls' 80m, 85	1.00	1,000	1.00	Boys' 15,111,572,745,182,864,683,827,200m, 10 yrs. and under	7,555,786,372,591,432,341,913.60	1,000
Girls' 80m, 86	1.00	1,000	1.00	Boys' 30,223,145,490,365,729,367,654,400m, 10 yrs. and under	15,111,572,745,182,864,683,827.20	1,000
Girls' 80m, 87	1.00	1,000	1.00	Boys' 60,446,290,980,731,458,735,308,800m, 10 yrs. and under	30,223,145,490,365,729,367,654.40	1,000
Girls' 80m, 88	1.00	1,000	1.00	Boys' 120,892,581,961,462,917,470,617,600m, 10 yrs. and under	60,446,290,980,731,458,735,308.80	1,000
Girls' 80m, 89	1.00	1,000	1.00	Boys' 241,785,163,922,925,834,941,235,200m, 10 yrs. and under	120,892,581,961,462,917,470,617.60	1,000
Girls' 80m, 90	1.00	1,000	1.00	Boys' 483,570,327,845,851,669,882,470,400m, 10 yrs. and under	241,785,163,922,925,834,941,235.20	1,000
Girls' 80m, 91	1.00	1,000	1.00	Boys' 967,140,655,691,703,339,764,940,800m, 10 yrs. and under	483,570,327,845,851,669,882,470.40	1,000
Girls' 80m, 92	1.00	1,000	1.00	Boys' 1,934,281,311,383,406,679,529,881,600m, 10 yrs. and under	967,140,655,691,703,339,764,940.80	1,000
Girls' 80m, 93	1.00	1,000	1.00	Boys' 3,868,562,622,766,813,359,059,763,200m, 10 yrs. and under	1,934,281,311,383,406,679,529,881.60	1,000
Girls' 80m, 94	1.00	1,000	1.00	Boys' 7,737,125,245,533,626,718,119,526,400m, 10 yrs. and under	3,868,562,622,766,813,359,059,763.20	1,000
Girls' 80m, 95	1.00	1,000	1.00	Boys' 15,474,250,491,067,253,436,239,052,800m, 10 yrs. and under	7,737,125,245,533,626,718,119,526.40	1,000
Girls' 80m, 96	1.00	1,000	1.00	Boys' 30,948,500,982,134,506,872,478,105,600m, 10 yrs. and under	15,474,250,491,067,253,436,239,052.80	1,000
Girls' 80m, 97	1.00	1,000	1.00	Boys' 61,897,001,964,269,013,744,956,211,200m, 10 yrs. and under	30,948,500,982,134,506,872,478,105.60	1,000
Girls' 80m, 98	1.00	1,000	1.00	Boys' 123,794,003,928,538,027,489,912,422,400m, 10 yrs. and under	61,897,001,964,269,013,744,956,211.20	1,000
Girls' 80m, 99	1.00	1,000	1.00	Boys' 247,588,007,857,076,054,979,824,844,800m, 10 yrs. and under	123,794,003,928,538,027,489,912,422.40	1,000
Girls' 80m, 100	1.00	1,000	1.00	Boys' 495,176,015,714,152,109,959,649,689,600m, 10 yrs. and under	247,588,007,857,076,054,979,824,844.80	1,000

EXTRAS—Tag of War, Egg Race, Potato Race, etc.
GRAND DISPLAY OF FIREWORKS
BIG DANCE in evening in Massey-Harris Hall
GOOD MUSIC WILL BE PROVIDED
Admission: Adults, 25c; Children, 15c
Entire Proceeds of the day goes to Saskatchewan Branch, Canadian Patriotic Association
COME ONE! COME ALL!
A. MacINTOSH, President. JAS. ELDER, Sec.-Treas.



Blairmore Ring at the WDM Saskatoon

Saskatchewan Innovation

Blairmore Ring

WDM-2017-S-49

The Blairmore is a water bearing layer below the earth's surface that sits above large areas of potash deposits. In the 1950s, when miners were first attempting to access potash deposits in Saskatchewan, they couldn't get through the Blairmore to bring up the mineral. The Blairmore kept flooding their mine shafts, making them unusable. In the 1960s, the Blairmore Ring was created to get through this layer. The idea was to layer cast iron rings on one another after (temporarily) freezing the water around the Blairmore layer. This would create an open shaft to allow access to the potash deposits below. Each ring weighed about 28 tonnes and stretched five meters across. Up to 100 rings were used to get through the Blairmore. Today, modified versions of the Blairmore Ring are still used in potash mining.

One Blairmore ring is on display in front of the WDM Saskatoon. This specific ring was displayed on a raised column in Saskatoon's Rotary Park from 1965 until 2001, when it was moved to the Saskatoon John G. Diefenbaker International Airport. In 2017, the ring was donated to the WDM where it now sits, commemorating the innovation that unlocked Saskatchewan's potash resources.

Caring For Our Artifact Collection



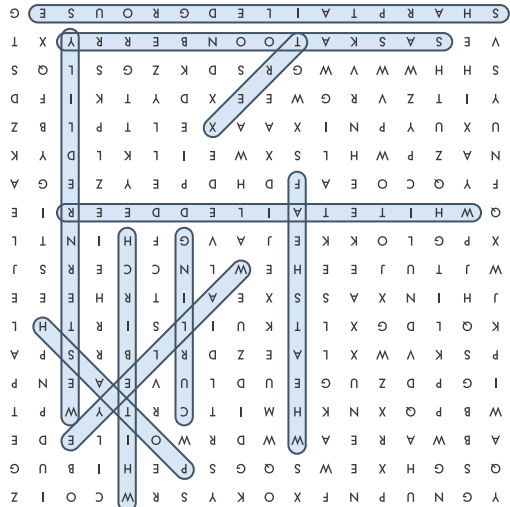
WDM Staff (L-R): Julie Jackson, Kaiti Hannah, Melissa Stus, Heather Englebert, Mark Anderson, Abby Vadeboncoeur

Curatorial Department staff at the WDM Corporate Office in Saskatoon spent three days in March reorganizing artifact storage spaces and making room for new acquisitions. This is part of a long-term plan to help us better manage and care for our artifact collection.

To learn more about how the WDM manages our collection, visit wdm.ca/collections to see the *Collections Development Plan*.

Brainbuster Answers

Word Search



Search for the Saskatchewan Symbol



The Western Red Lily is on page 9.

Weather Quiz

1. A – In 1983, Kenaston was dubbed the blizzard capital due to the large number of winter blizzards they endure.
2. A – Estevan averages over 2,400 hours of sunshine/year. While they call themselves the sunniest place in SK, other communities like Weyburn, Kindersley, Swift Current and Broadview average around the same amount of sunshine.
3. B – Regina was struck by an F-4 tornado on June 30, 1912, killing 28 people, injuring 200 and leaving 2,500 people homeless.
4. A – Yellow Creek and Midale hit 45 C on July 5, 1937.
5. C – Maple Creek is the provincial hot spot more days than any other community.

Western Development Museum – Corporate Office
2935 Lorne Avenue
Saskatoon, SK S7J 0S5



WDM Corporate Office

For SPARKS and membership questions
please contact us at:

Phone: 306-934-1400

Toll Free: 1-800-363-6345

Email: info@wdm.ca

WDM Corporate Office Business Hours

8:30 am – 4:30 pm Monday – Friday

Closed statutory holidays



[WDM.CA](http://wdm.ca)



#SaskInspired



Saskatchewan Golden Jubilee pennant, 1955
WDM-2004-S-222