



JULY – SEPTEMBER 2021 • VOLUME 45, EDITION 3

# SPARKS

NEWSLETTER OF THE WESTERN DEVELOPMENT MUSEUM



KANAWEYIMIK CHILD & FAMILY SERVICES INDIGENOUS TEACHINGS AT THE WDM NORTH BATTLEFORD

## WDM PROGRAMS

Virtual Summer Camps

## FEATURE ARTICLE

Kanaweyimik tipi  
teachings

## TIME CHANGES EVERYTHING

Balances and scales



# UPCOMING EVENTS

## All Locations

<b>Through August 4</b>	Where the Wildflowers Grow Seek and Find
<b>Through August 4</b>	Find the Vintage Logos Seek and Find
<b>August 5 - September 6</b>	Adventures in Time Hopping Seek and Find
<b>August 5 - September 6</b>	Colours of the Saskatchewan Flag Seek and Find

## WDM Moose Jaw

<b>July 7 and July 10</b>	Camping and Exploring Saskatchewan *
<b>July 21 and July 24</b>	Gardening in Saskatchewan *
<b>August 11 and August 14</b>	Cabinet of Curiosities *
<b>August 25 and August 28</b>	Communication is Key *

## WDM North Battleford

<b>Through August 27</b>	Kanaweyimik Child & Family Services Indigenous Teachings (Wed - Fri)
<b>July 14</b>	Camping and Exploring Saskatchewan *
<b>August 18</b>	Wheat Weaving *
<b>August 28 and August 29</b>	Cabinet of Curiosities *

## WDM Saskatoon

<b>July 10</b>	Camping and Exploring Saskatchewan *
<b>July 17</b>	History of Gender Roles in Rock N Roll *
<b>July 21</b>	Communication is Key *
<b>July 28</b>	Gardening in Saskatchewan *
<b>August 4</b>	History of Gender Roles in Rock N Roll *
<b>August 11</b>	Camping and Exploring Saskatchewan *
<b>August 21</b>	Gardening in Saskatchewan *
<b>August 28</b>	Wheat Weaving *

## WDM Yorkton

<b>July 14 and July 17</b>	Gardening in Saskatchewan *
<b>July 21 and July 24</b>	Camping and Exploring Saskatchewan *
<b>August 4 and August 7</b>	Cabinet of Curiosities *
<b>August 11 and August 14</b>	Communication is Key *
<b>August 25</b>	History of Gender Roles in Rock N Roll *
<b>August 28</b>	Wheat Weaving *

\* Pre-Registration Required

Events and dates listed here are subject to change.

For details visit [wdm.ca](http://wdm.ca).

## A MESSAGE FROM THE CEO



### Returning to a New Normal

With summer arriving, I am feeling a renewed sense of optimism as many of the pandemic restrictions we have been living with for over a year are being lifted. We are looking forward to welcoming members, volunteers and visitors back into our Museum spaces without the capacity restrictions that we have been operating under.

The reopening of businesses and activities is an encouraging sign that we are coming to the end of pandemic restrictions. Even better, is the ability to be with friends and family. This past year has been isolating for so many. Being able to connect with those important to us, without having to go through various technologies, is welcome news.

Even though the number of visitors allowed in our spaces will be increasing, summer activities at all Museum locations will focus on programs and activities for smaller groups.

This ensures there will be a variety of things to do when visiting each of our locations, without the inherent risks associated with large gatherings. Virtual summer camps are also being planned as well as a new virtual school program for the fall.

This summer, we are honoured to partner with Kanawayimik Child & Family Services and grateful for the teachings they will be sharing with us. Six tipis have been set up at the WDM North Battleford and Kanawayimik will be offering teachings throughout the summer. Details, and the full summer schedule, can be found at [wdm.ca/nb-tipi-teachings](http://wdm.ca/nb-tipi-teachings). Teachings will take place Wednesday through Friday from 11:00 am - 5:00 pm and are free with Museum admission.

Have a wonderful summer everyone.

Sincerely,

A handwritten signature in black ink, appearing to read 'Joan', with a long, sweeping underline.

Joan Kanigan, CEO

#### HOURS OF OPERATION

**WDM Moose Jaw, North Battleford and Yorkton**  
10:00 am – 5:00 pm Daily

**WDM Saskatoon**  
9:00 am – 5:00 pm Daily

**Boomtown Café**  
8:30 am – 4:00 pm

Corporate Office remains closed to the public.

#### ON THE COVER

WDM North Battleford and Kanawayimik Child & Family Services staff pose in front of a traditional tipi following a pipe ceremony on June 9, 2021. A temporary collection of tipis is on display on the south lawn of the WDM North Battleford for the summer of 2021. You will have the opportunity to participate in a variety of teachings through August 27.

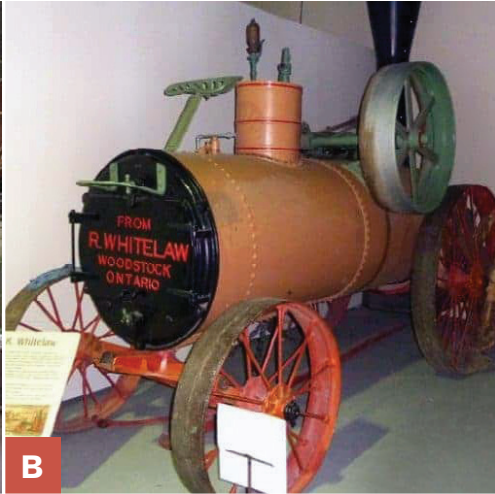
Details at [wdm.ca/nb-tipi-teachings](http://wdm.ca/nb-tipi-teachings)

# IN THE GALLERIES

**A** WDM Moose Jaw  
Observatory (WDM-1989-MJ-7)  
WDM Exhibit



**B** WDM North Battleford  
R. Whitelaw Portable Return Flue Steamer  
(WDM-1973-S-313)  
WDM Exhibit



**C** WDM Saskatoon  
1911 Rauch and Lang Electric Car (WDM-1973-S-201)  
WDM Exhibit

**D** WDM Yorkton  
1907 Maxwell Roadster (WDM-Y-4940)  
WDM Exhibit

# #MEMORYMONDAYS

On the first Monday of each month, our Facebook page features historic Saskatchewan memories. Feel free to share our post or comment with your own memory.

Find us on Facebook at [facebook.com/wdm.museum](https://www.facebook.com/wdm.museum)

With summer and the warmer weather here, our #MemoryMondays for this issue are about a common summer pastime and form of transportation: bicycles and tricycles. Providing freedom to get around to kids unable to drive, a great form of exercise, and a source of fun and excellent memories, bicycles and tricycles have played a part in the childhoods (and adulthoods) of many people in Saskatchewan for over a century.



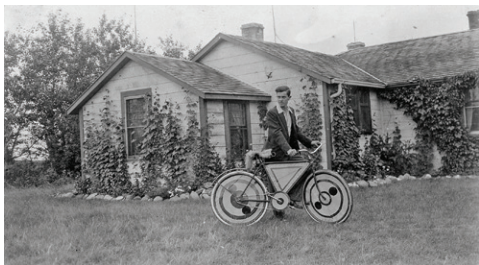
THIS PHOTO OF A SMALL CHILD ON A TRICYCLE WAS TAKEN ON CHRISTMAS DAY, 1947  
WDM BARTON COLLECTION 08030



THIS UNDATED PHOTO SHOWS THREE CHILDREN WITH THEIR BICYCLES  
WDM BARTON COLLECTION 12067



THIS PHOTO TWO BOYS, AGE 7 AND 4, ON TRICYCLES IN NOVEMBER 1919  
WDM BARTON COLLECTION 04015



THIS PHOTO FROM JUNE 1932 SHOWS A MAN WHO HAD DECORATED HIS BIKE IN VERY STRIKING COLOURS. THE NOTES ON THE PHOTO REMARK THAT THE CARDBOARD ON THIS BIKE WAS COLOURED BLUE, YELLOW AND RED  
WDM BARTON COLLECTION 04059

## The S.S. City of Medicine Hat: Saskatchewan's Greatest Shipwreck

When searching for shipwrecks, Saskatchewan is not generally the first place anyone would think to look. However, despite being completely landlocked, Saskatchewan has at least one famous shipwreck.

On June 7, 1908 the S.S. City of Medicine Hat, an elaborate steam ship designed and captained by Horatio Hamilton Ross, was traveling through Saskatoon on its way to Winnipeg from Medicine Hat. The South Saskatchewan river, still high from spring run-off, was difficult to navigate. Ross had the smokestack lowered to make it easier for the ship to pass under the Victoria Street Traffic Bridge. The high waters would have made it difficult to travel under the bridge under the best of circumstances, but there was another complication.

A telegraph wire was strung across the river but the high waters hid it from view. This wire got caught in the ship's rudder, making it impossible to steer. The ship crashed into the southernmost pier of the Traffic Bridge and tipped onto its side.

Luckily, many of the passengers on the ship had been let off to see the sights in Saskatoon as the ship had approached the city. Most of the people remaining on board the ship were crew. All people aboard the ship made it off safely, helped in part by several residents who had been standing atop the bridge to catch a glimpse of the ship as it passed through Saskatoon.

City of Saskatoon engineers pulled the ship off the bridge, cut it into pieces, and left it at the bottom of the river. A few pieces of the ship, including its boiler, were recovered. This boiler is now in the WDM collection and is stored at the WDM Moose Jaw.



LIFEBOAT ANCHOR FROM THE S.S. MEDICINE HAT,  
CURRENTLY ON DISPLAY AT THE WDM MOOSE JAW  
WDM-1975-MJ-221

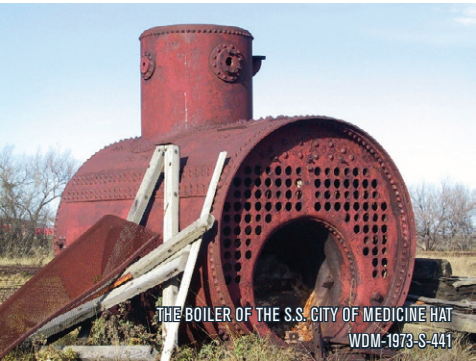
The S.S. City of Medicine Hat remained largely forgotten by City of Saskatoon residents. A sandbar formed over its remains, burying it from view, and later it was covered by infill land as the park area around the south side of the traffic bridge was developed into Rotary Park.

The ship sprang back into memory in 2006 when an anchor was recovered during a training exercise for Saskatoon Fire and Protective Services. Analysis concluded that the anchor was from the S.S. City of Medicine Hat, and arrangements were made for a five day underwater archaeological excavation of the ship in 2008. A number of artifacts were recovered and a documentary film, "The Last Steamship: The Search for the S.S. City of Medicine Hat," was produced about the excavations. In 2012 when parts of the Traffic Bridge were being demolished, more artifacts were recovered.

# FEATURE



INTERIOR OF THE S.S. CITY OF MEDICINE HAT EXHIBIT



THE BOILER OF THE S.S. CITY OF MEDICINE HAT  
WDM-1973-S-441



INTERIOR OF THE S.S. CITY OF MEDICINE HAT EXHIBIT


The anchor from the S.S. City of Medicine Hat is now on display at River Landing in Saskatoon, a small reminder of the Saskatoon's greatest shipwreck.

## WDM BOARD OF DIRECTORS


- Orlanda Drebit, Chair – Saskatoon
- Gwen Beitel – Spring Valley
- Bernie Broughton – Saskatoon
- Robert Linn – Saskatoon
- Kelsie Rock – Regina
- Shauna Stanley-Seymour – Springside
- Brian Webb – Regina

# VIRTUAL SUMMER CAMP 2021

Have you ever wondered...




How do you make a feeder for butterflies?




How do you make one of the most popular recipes from 1955?

*Hint: it involves Jell-O!*



How quickly can the fastest animal in Saskatchewan run?



How much sugar was allowed per person during rationing in the Second World War?

Most activities are designed for explorers aged 6-12, but since curiosity has no age limit, our Virtual Camp is open to all ages.

With your camp registration, you get access to activities on all of the following themes.

### From There to Here

Explore traditions brought to Saskatchewan from other countries, including pysanky from Ukraine, chocolate fish from New Zealand, constellations influenced by the ancient Greeks, the puff puff snack from Nigeria and explore the history of the Duanwu (dragon boat) festival in China.

### Look for the Helpers

During the COVID-19 pandemic, so many people have helped each other. Explore Saskatchewan's "helpers", including the air ambulance CF-SAM, teachers, nurses and doctors. Say "thank you" by writing a note to an essential worker.

### Would You Eat That?!

Try out recipes from decades past, like ration-book meals from the Second World War and a 1950s recipe for Jello-O molds made with tuna salad. See if they've stood the test of time.

### Animals of Saskatchewan

Discover fun Saskatchewan animal facts, make a cow mask, do butterfly bingo and learn all about beavers.



## Pricing

The WDM values accessibility. Even though our camps are virtual, pre-printed camp kits are available for families with limited access to the internet or a printer.

### WDM Members

Virtual kit for 1 child: \$54  
Virtual kits for 2+ children: \$72  
Printed kit price per child: \$58.50

### General Public

Virtual kit for 1 child: \$60  
Virtual kits for 2+ children: \$80  
Printed kit price per child: \$65

For more information and to register: [wdm.ca/virtualcamps](https://wdm.ca/virtualcamps)



## Liar's Club

Cue game show music...introducing the WDM's version of Liar's Club. Liar's Club was an American game show, featuring a panel of celebrity guests who offered explanations of obscure or unusual objects. Contestants attempted to determine which explanation was correct.

How good are you at sifting truth from lies? Test your lie-detector skills below.



**Which of the following artifact explanations is the truth?**

- a. These massage paddles were used by early massage therapists to increase blood flow and circulations. They are used by lightly patting the metal pricks along the soles of the feet and palms of the hands of the patient.
- b. These carding combs with small, metal, hook-like teeth are used to straighten and clean wool. They are used by placing teased wool across one of the combs and drawing the second comb across the first.
- c. These combs were used to remove hair from freshly butchered meat. Butchering animals at home was common practice on farms and the meat was cleaned by lightly brushing the combs across the flesh.



**Which of the following artifact explanations is the truth?**

- a. This is a tie press used to ensure neckties were wrinkle-free. The two plates come apart and a necktie is placed between them, the wing nuts are then tightened to secure it in place.
- b. This is a wallet used to carry paper money. The two plates come apart and notes are placed between them, the wing nuts are tightened to be sure the notes all stay in place. The sleek design allowed for it to be easily carried in one's pocket.
- c. This is an early binder used to keep a document together. The wooden plates were tightened on either side of a stack of papers. Often used by accountants, this device became known as a number cruncher.

## Enjoy these puzzles?

Starting July 5, find more like it at **Liar's Club** online at [wdm.ca/liarsclub](http://wdm.ca/liarsclub)

Want more activities like these?

Visit [wdm.ca/at-home-activities](http://wdm.ca/at-home-activities)

## Search for the Saskatchewan Symbol

Hidden somewhere in this issue of Sparks is a Western Red Lily like this one. This lily is Saskatchewan's official flower.



**Can you find it?**



## Spot the Differences

WDM North Battleford Heritage Village represents Saskatchewan in the 1920s, when towns across Saskatchewan were beginning to offer some basic health care services like doctors, nurses and drug stores. In our Village, one building holds both the doctor's office and the drug store, which was a common arrangement.

Look closely to spot 5 differences between the two pictures of the drug store shelves.

## Enjoy this puzzle?

Solve more like it in **The Last Key**, a virtual escape room featuring the Heritage Village online at [wdm.ca/escaperoom](http://wdm.ca/escaperoom)

Answers on page 19

# ROLLING WITH PRIDE

## Roller Derby Artifacts from the Saskatchewan LGBTQ2S+ Community

The featured artifacts of this issue are a roller derby helmet and jersey, which are part of our *Saskatchewan LGBTQ2S+ History Collection*. Roller derby is a popular sport among LGBTQ2S+ players due to its open, accepting attitudes and the ways in which players challenge traditional gender roles and the gender binary.

This roller derby helmet and uniform were worn by a member of the Saskatoon Roller Derby League from 2010 until 2012. The league was started in 2007 by six players in Saskatoon. By 2014, there were 95 players in the league and there were three teams: Mindfox, the all-star team, Killa Bees, the b-ranking travel team, and Rookie Rockets, the rookie team for players who did not yet qualify for the travel teams.

This jersey was the travel uniform for the entire Saskatoon Roller Derby League until around 2012 when it was replaced with t-shirts featuring each individual team's logo. The player this uniform belonged to was on the Mindfox team when they won the 2012 Nationals. However, she did not compete at the 2012 Nationals due to a previous injury.

The helmet is decorated with a variety of stickers, many of which contain puns or other jokes. These stickers would be collected when players visited and played against other teams. According to the donor, decorating helmets was common in the early 2010s, however it has become far less common in recent years as many players have switched from skateboarding helmets to hockey helmets with growing concern over concussions in the sport.



WDM-2014-S-27



WDM-2018-S-26

# WDM EDUCATION PROGRAMS

## SUMMER WORKSHOP SERIES

Get hands-on with history this summer at one of our Saskatchewan-inspired workshops. Workshop dates and participant ages vary, so check our website for more information about the workshops that spark your curiosity.

### Gardening in Saskatchewan

Explore plants native to Saskatchewan and some of the insects that visit our gardens like butterflies, dragonflies and fireflies. Make take home insect crafts and your very own fairy garden that includes a Saskatchewan hardy plant.

### Wheat Weaving

Learn about the history and the art of wheat weaving in Saskatchewan and create your own basic wheat weaving creations. (Adults only)

### Communication is Key

Learn about communication in the early 20th century, specifically hand-written letters and postcards and telegraphy. Then, practice your cursive writing with a quill pen and try your hand at Morse code.

### Camping & Exploring Saskatchewan

Explore what being outdoors in the summer was like throughout the last 100 years. Learn about how to plan your own Saskatchewan camping adventure, make a felt s'more craft, and take home an outdoor BINGO game card.

### Cabinet of Curiosities

Where does the idea of museums come from? Learn about the history of "cabinets of curiosity" and how that connects to modern day museums. Put your new knowledge to work creating your own artifact display or "portable museum in a book" with items you bring from home.

### History of Gender Roles in Rock N Roll

The WDM and Girls Rock Saskatoon have come together to highlight Rock N Roll history. This high-energy workshop will get you moving and leave you inspired to learn more about music history – and perhaps dreaming about one day being a part of that history yourself.



WHEAT WEAVING



CAMPING & EXPLORING SASKATCHEWAN



Pre-registration is required for all workshops, attendance will be restricted to small groups, and COVID-19 protocols will be in place to ensure participant safety.

For more information or to register: [wdm.ca/workshops](https://wdm.ca/workshops)

# KANAWEYIMIK CHILD & FAMILY SERVICES COMMUNITY EXHIBIT TIPIS

## In Partnership with the WDM North Battleford

In partnership with Kanaweyimik Child & Family Services, tipis have been set up on the south lawn of the WDM North Battleford for the summer of 2021. The tipis will be used for cultural activities through August 27. These activities will include:

### TIP AND MOSS BAG TEACHINGS

The tipi structure teaches family values critical to ensuring families lived a healthy lifestyle. The values signified by each pole taught every individual to conduct themselves accordingly. Moss Bag Teachings teaches the significance of security for the infant; the careful wrapping of the infant so they would learn to use their sense of smell, sight, hearing as they lie quietly in the moss bag. Parenting values are intertwined into the teaching.

### FOOD PRESERVATION TEACHINGS

Crushing and drying chokecherries, drying Saskatoon berries, smoking meat and fish, bannock making, medicines/herbs and smudging information will be shared. These teachings demonstrate the traditional ways Indigenous families stored food without modern-day conveniences.



## HAND DRUM MAKING TEACHINGS AND BEADING

The significance of the drum beat with the heartbeat will be shared while individuals are shown how to make a hand drum. The drum is used in ceremonies and dances. Beading is a craft used to decorate clothing and make earrings, bracelets, etc.

## TRADITIONAL GAMES

Lamar Osusiskaywin will share traditional games that were common in pre-European era.

## LOCAL HISTORY OF SURROUNDING COMMUNITIES

Elders will share history of the Battlefords and surrounding First Nations. Elders sharing historical names of Indigenous families as they evolved over time.

## INTERGENERATIONAL IMPACTS ON INDIGENOUS FAMILIES

Join us for a discussion on various impacts affecting traditional Indigenous lifestyles and practices including reserve systems for Indigenous families, the welfare system, residential schools and the 60's scoop.



Full schedule details can be found at  
**[wdm.ca/nb-tipi-teachings](http://wdm.ca/nb-tipi-teachings)**

Teachings will take place Wednesday - Friday  
from 11:00 am - 5:00 pm and are free with  
Museum admission.

“

In the spirit of reconciliation, Kanawayimik wishes to provide some basic teachings to create a better understanding of local Indigenous history, culture and traditions. It is intended for those wishing to understand our history and culture. An opportunity came to partner with the Western Development Museum to fill a gap in the local history portrayed at the Museum and Kanawayimik took the opportunity. The Battlefords and surrounding communities have a shared history and its time to share our history. The rest of the Museum has a lot of non-Indigenous history but very little on Indigenous history. We appreciate the opportunity to share our history. We invite you to come and learn at the tipi village.

”

**Marlene Bugler, Executive Director**  
*Kanawayimik Child & Family Services*



# ARTIFACT SPOTLIGHT

## MOOSE JAW

### Superintendent's Car

WDM-1973-NB-345

Built in 1884 and in use until 1957, this sleeping car was named the St. Lawrence. It served as a sleeping car until 1907 when it was converted to an official car named Brunswick and was part of the first passenger train to travel from Winnipeg to the new Canadian Pacific Railway station in Saskatoon.

This train car was renamed multiple times until 1929 when it was given a number for its name: 9. In the 1950s, this car was used by the CPR's superintendent of the Saskatoon division. It was retired from use in 1957 and in 1959 it came to the WDM. It is now housed in the rail gallery of the WDM Moose Jaw.



## NORTH BATTLEFORD

### Desk, Haultain

WDM-1973-NB-10129

This desk, currently on display in the WDM North Battleford, was built in around 1891 and was used by Sir Frederick William Alpin Gordon Haultain, Chief Justice of the Court of Appeal, Saskatchewan, from 1891 to 1897 while he was chairman of the executive committee of the Northwest Territories.

From 1897 until 1939 this desk was used by a variety of civil servants and local government officials in Regina before coming to the Western Development Museum in 1956.



## SASKATOON

### Pierce-Arrow Limousine

WDM-1973-S-156

This 1936 Pierce-Arrow Limousine was the height of luxury in its time. In operation from 1901 until 1938 when the company went under due to lack of funds, Pierce-Arrow cars were sought out by the wealthy and powerful. Pierce-Arrow did not produce a lower-priced, less luxurious car to bring in money to offset the cost of making more expensive vehicles, and this may have contributed to the company's downfall. This vehicle is on display in the WDM Saskatoon's transportation gallery.



## YORKTON

### Electric Band Box

WDM-1973-NB-652

This band box operated from the lunch counter of North Battleford's Marlborough Hotel from 1951 until the early 1960s. It ran on electricity and for five cents would play the "hit tune of the week". The seven human figures would move as if they were playing the song themselves.

In 1966, this band box came into the WDM's collection, and it can now be seen in the 100 Years of Saskatchewan History section of the WDM Yorkton.



## Time Changes Everything: BALANCES AND SCALES

For millennia, people have been finding ways to consistently weigh things. From grain to metal to mail, determining weight is an important part of doing business. Even today, there is no one universally agreed upon method of measuring weight. Kilograms, pounds and stone are just some of the ways people measure themselves and the world around them.

Early scales would have two plates or trays of equal weight hanging from a rod which was balanced on a pole or beam. Adding items of equal weight to each plate would keep the scale balanced while having heavier items on one side would lower that side and raise the lighter side. This was an easy way to visually determine whether two items weighed the same or not.

Balance scales were used with little change for over three thousand years until 1770 when the spring scale was invented. These scales used calculations to determine how much pressure was put on a spring and therefore how much the item on the spring weighed.

More recently, technology has allowed for the development of digital scales, with the first patent on a digital scale being filed for in 1980.

Here is a look into some of the scales in the WDM collection.



THIS BALANCE SCALE FROM SOMETIME BETWEEN 1870 AND 1884 WAS MADE IN ENGLAND AND LATER BROUGHT TO CANADA BY EDITH BLAINE, WHO WAS A COOK AT CANNINGTON MANOR BEFORE MOVING HER FAMILY TO LEROY IN AROUND 1906

WDM-1974-S-218



THIS IS A MINER'S BALANCE SCALE FROM SOMETIME PRIOR TO 1885. THE FOUR ROUND PIECES ARE WEIGHTS THAT WOULD BE USED TO DETERMINE THE WEIGHT AN OBJECT

WDM-1973-Y-2515



THIS IS A POCKET SCALE FROM 1898, USED DURING THE KLONDIKE GOLD RUSH

WDM-1973-Y-4228



THIS IS A COMPUTING SCALE MADE BETWEEN 1897 AND 1900. COMPUTING SCALES INDICATE BOTH THE WEIGHT AND THE PROPER PRICE FOR AN ITEM. THIS SCALE IS CURRENTLY ON DISPLAY IN THE WDM SASKATOON IN THE BOOMTOWN GENERAL STORE

WDM-1973-NB-1223



THIS SCALE FROM AROUND 1925 WAS USED IN THE CONNAUGHT STORE. THIS SCALE SHOWED NOT JUST THE WEIGHT BUT ALSO THE PRICE PER POUND OF AN ITEM. IT IS CURRENTLY ON DISPLAY IN THE CO-OP IN THE WDM NORTH BATTLEFORD VILLAGE

WDM-1973-NB-6824



THIS 1954 POSTAL SCALE USES SPRINGS RATHER THAN WEIGHTS TO MEASURE THE WEIGHT OF AN OBJECT. THE DIAL INDICATES WEIGHT AND PRICE FOR LOCAL LETTERS, LETTERS SENT ACROSS CANADA, WITHIN THE BRITISH COMMONWEALTH, NORTH AMERICA, SOUTH AMERICA, FRANCE AND SPAIN. IT IS CURRENTLY ON DISPLAY IN THE TELEPHONE/POST OFFICE IN THE WDM NORTH BATTLEFORD HERITAGE VILLAGE

WDM-1993-S-302



THIS C. 1965 SCALE IS ONE OF THE EARLIEST ELECTRIC SCALES IN THE WDM COLLECTION. IT WAS USED IN A LOCALLY OWNED BUTCHER SHOP IN SASKATOON, WHICH WAS IN OPERATION FROM THE 1920S TO THE MID-1970S

WDM-2000-S-623

## BRAINBUSTER ANSWERS

### Liar's Club

1. B carding combs
2. A tie press

Enjoy these puzzles?

Starting July 5, find more like it at **Liar's Club** online at [wdm.ca/liarsclub](http://wdm.ca/liarsclub)

### Search for the Saskatchewan Symbol



The Western Red Lily is on page 14.

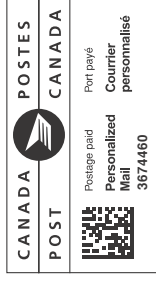
### Spot the Differences



### Enjoy this puzzle?

Solve more like it in **The Last Key: a virtual escape room** featuring the Heritage Village online [wdm.ca/escaperoom](http://wdm.ca/escaperoom)

Western Development Museum – Corporate Office  
2935 Lorne Avenue  
Saskatoon, SK S7J 0S5



### WDM Corporate Office

For SPARKS and membership questions  
please contact us at:

Phone: 306-934-1400

Toll Free: 1-800-363-6345

Email: [info@wdm.ca](mailto:info@wdm.ca)

### WDM Corporate Office Business Hours

8:30 am – 4:30 pm Monday – Friday

Closed statutory holidays

SPARKS Editor: Kerry Lubchenko

© 2021 Western Development Museum



QUEEN ELIZABETH II GOLDEN JUBILEE FIGURINE "TROOPING THE COLOUR," 2002  
WDM-2017-S-77



[WDM.CA](http://wdm.ca)



#SaskInspired